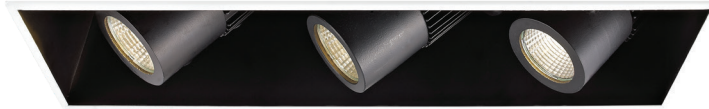


MT-4LD3 - 3 Light

4" LED Precision Multiples

WAC



Fixture Type:

Catalog Number:

Project: _____

Location: _____

PRODUCT DESCRIPTION

Retractable, adjustable spot lights

FEATURES

- ELV and 0-10V dimming options
- Invisible Trim™ is designed to sit flush with the ceiling for a clean, architectural look
- Fully retractable from housing
- 365° horizontal rotation and 180° vertical aiming
- Accepts 1 replacement lens
- 50,000 hour rated life
- 5 year WAC Lighting product warranty

SPECIFICATIONS

Construction: Die-cast aluminum heat sink painted black. Trim, housing and junction box are 20 gauge steel. Frame and hanger bars are heavy gauge galvanized steel.

J-Box: Seven knockouts and four Romex® style wiring connectors provided for ease of installation. Rated for branch wiring.

Driver: Universal (120V - 277V) or 120V input only

Light Source: High output LED (included with housing)


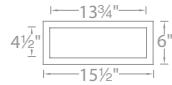
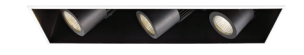
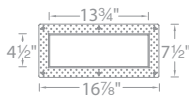
Dimming: 0-10V or ELV (see list of housings below)

Mounting: Supplied with hanger bars, adjustable from 9¼"-24½" to accommodate various joist construction and grid sizes. Hanger bars include a captive mounting "screw-nail" for ease of installation. Accommodates surface up to 1" thick. 14½" x 5½" cutout with trim, 14½" x 5½" cutout for Invisible Trim™. See instruction sheet for details on installation using spackle ring.

Finish: Abrasion resistant powder coat paint in Black (BK).

Standards: ETL & cETL Damp Location listed. Airtight.

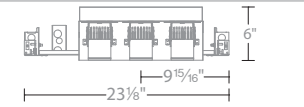
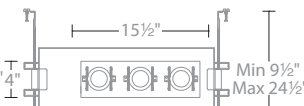
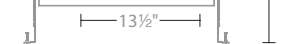
TRIMS

		MT-4LD316T Trim	WT White BK Black
		MT-4LD316TL Invisible Trim™	WT White



Example: **MT-4LD316T-BK**

HOUSINGS

	Power	Beam	Color Temp	CRI	Interior
	MT-4LD316N 0-10V dimming Non-IC, 120V-277V input	15W x 3	27 2700K 85 927 2700K 90	BK Black	
	MT4LD316NE ELV dimming Non-IC, 120V input	15W x 3	S 20° F 40° 30 3000K 85 930 3000K 90		
	MT4LD311NE ELV dimming IC-Rated, 120V input	11W x 3	35 3500K 85 40 4000K 85		



Example: **MT-4LD316NE-S927-BK**

REPLACEMENT LENS

Amber	LENS-16-AMB	UV Filter	LENS-16-UVF
Blue	LENS-16-BLU	Frosted	LENS-16-FR
Green	LENS-16-GRN	Spread	LENS-16-SPR
Red	LENS-16-RED	Beam Elongator	LENS-16-BEL

wacighting.com

Phone (800) 526.2588

Fax (800) 526.2585

Headquarters, East Manufacturing Facility

44 Harbor Park Drive

Port Washington, NY 11050

South East Manufacturing Facility

1600 Distribution Ct

Lithia Springs, GA 30122

Central Manufacturing Facility

1700 South J Elmer Freeway, Ste 100

Cedar Hill, TX 75104

West Manufacturing Facility

1750 S Archibald Ave

Ontario, CA 91761

MT-4LD3 - 3 Light

4" LED Precision Multiples



LUMINAIRE PERFORMANCE	Power Per Light	Beam	Photometry	Color Temp	CRI	Lumen	CBCP
MT-4LD316N 0-10V dimming Non-IC, 120V-277V input	15W	S 20°		27 2700K 85 3900 6990 x 3			
				927 2700K 90 3240 5800 x 3			
				30 3000K 85 4050 7270 x 3			
				930 3000K 90 3360 6010 x 3			
MT4LD316NE ELV dimming Non-IC, 120V input	15W	S 20°		27 2700K 85 3900 6990 x 3			
				927 2700K 90 3240 5800 x 3			
				30 3000K 85 4050 7270 x 3			
				930 3000K 90 3360 6010 x 3			
MT4LD311NE ELV dimming IC-Rated, 120V input	11W	S 20°		27 2700K 85 3090 5570 x 3			
				927 2700K 90 2565 4620 x 3			
				30 3000K 85 3210 5790 x 3			
				930 3000K 90 2655 4790 x 3			
MT4LD316N	15W	F 40°		27 2700K 85 3795 3060 x 3			
				927 2700K 90 3150 2540 x 3			
				30 3000K 85 3945 3185 x 3			
				930 3000K 90 3270 2635 x 3			
MT4LD316NE	15W	F 40°		27 2700K 85 3795 3060 x 3			
				927 2700K 90 3150 2540 x 3			
				30 3000K 85 3945 3185 x 3			
				930 3000K 90 3270 2635 x 3			
MT4LD311NE	11W	F 40°		27 2700K 85 3000 2395 x 3			
				927 2700K 90 2475 1980 x 3			
				30 3000K 85 3120 2490 x 3			
				930 3000K 90 2580 2065 x 3			
MT4LD316N	15W	S 20°		27 2700K 85 3900 6990 x 3			
				927 2700K 90 3240 5800 x 3			
				30 3000K 85 4050 7270 x 3			
				930 3000K 90 3360 6010 x 3			
MT4LD316NE	15W	S 20°		27 2700K 85 3900 6990 x 3			
				927 2700K 90 3240 5800 x 3			
				30 3000K 85 4050 7270 x 3			
				930 3000K 90 3360 6010 x 3			
MT4LD311NE	11W	S 20°		27 2700K 85 3090 5570 x 3			
				927 2700K 90 2565 4620 x 3			
				30 3000K 85 3210 5790 x 3			
				930 3000K 90 2655 4790 x 3			
MT4LD316N	15W	F 40°		27 2700K 85 3795 3060 x 3			
				927 2700K 90 3150 2540 x 3			
				30 3000K 85 3945 3185 x 3			
				930 3000K 90 3270 2635 x 3			
MT4LD316NE	15W	F 40°		27 2700K 85 3795 3060 x 3			
				927 2700K 90 3150 2540 x 3			
				30 3000K 85 3945 3185 x 3			
				930 3000K 90 3270 2635 x 3			
MT4LD311NE	11W	F 40°		27 2700K 85 3000 2395 x 3			
				927 2700K 90 2475 1980 x 3			
				30 3000K 85 3120 2490 x 3			
				930 3000K 90 2580 2065 x 3			

REPLACEMENT HEADS (INCLUDES: ONE HEAD, LED, AND DRIVER)

Housing Model	Module
MT-4LD316N	4MT4LD16N-S27-BK
	4MT4LD16N-S30-BK
	4MT4LD16N-S35-BK
	4MT4LD16N-S40-BK
	4MT4LD16N-S927-BK
	4MT4LD16N-S930-BK
	4MT4LD16N-F27-BK
	4MT4LD16N-F30-BK
	4MT4LD16N-F35-BK
	4MT4LD16N-F40-BK
	4MT4LD16N-F927-BK
	4MT4LD16N-F930-BK
MT4LD316NE	4MT4LD16NE-S27-BK
	4MT4LD16NE-S30-BK
	4MT4LD16NE-S35-BK
	4MT4LD16NE-S40-BK
	4MT4LD16NE-S927-BK
	4MT4LD16NE-S930-BK
	4MT4LD16NE-F27-BK
	4MT4LD16NE-F30-BK
	4MT4LD16NE-F35-BK
	4MT4LD16NE-F40-BK
	4MT4LD16NE-F927-BK
	4MT4LD16NE-F930-BK
MT4LD311NE	4MT4LD11NE-S27-BK
	4MT4LD11NE-S30-BK
	4MT4LD11NE-S35-BK
	4MT4LD11NE-S40-BK
	4MT4LD11NE-S927-BK
	4MT4LD11NE-S930-BK
	4MT4LD11NE-F27-BK
	4MT4LD11NE-F30-BK
	4MT4LD11NE-F35-BK
	4MT4LD11NE-F40-BK
	4MT4LD11NE-F927-BK
	4MT4LD11NE-F930-BK