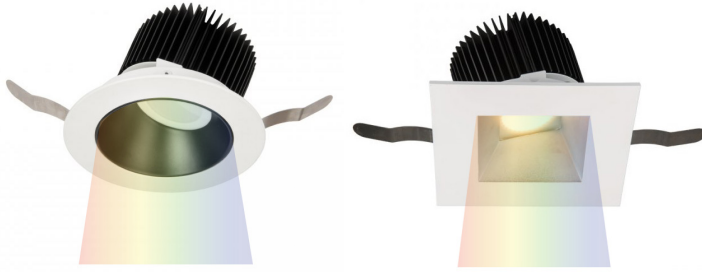


AETHER 3.5" - Color Changing Wall Wash Trim

R3ARWT, R3ASWT



Fixture Type:

Catalog Number:

Project: _____

Location: _____

PRODUCT DESCRIPTION

Aether Color Changing is a high-performance recessed downlight with a state-of-the-art color and CCT tuning LED controlled by DMX-512A and 0-10V technology. Available in a variety of trim options including a sleek trimless option which can be spackled directly up to the aperture. At 3.5" in housing height, Aether is designed to fit the most difficult tight plenum spaces.

FEATURES

- Shallow housing that is designed to fit in tight plenum spaces without sacrificing lumen output
- 3.5" trim aperture and 3.5" housing height
- Designed for even wall illumination both vertically and horizontally
- Full color gamut control through gradients of saturated colors from 1-100%
- Tunable White (CCT) Range: 1650-8000K
- DMX512-A CCT and color control with commissioning via RDM; dimming via DMX-512A or 0-10V
- Sold as a complete unit; housing and trim included

SPECIFICATIONS

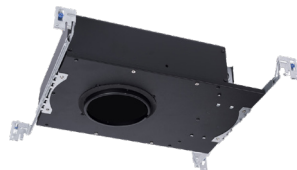
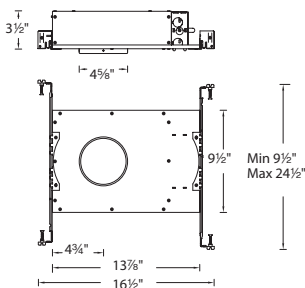
- Construction:** Die-cast aluminum trim with extruded aluminum heat sink
- Input:** Universal 120 - 277VAC, 50/60 Hz
- Power:** 22W, power factor 0.98
- Control:** 0-10V, DMX512-A with DMX commissioning via RDM
- Dimming:** 100% - 1% intensity control in CCT & color via DMX or 0-10V
- Mounting:** Retention clips firmly hold trim to housing
- Ceiling thickness:** ½" - 1½"
- Finish:** Powder Coated White and Black, Enamel Coated Black/White, Haze/White
- Standards:** ETL & cETL Listed, wet location listed trims

Trim (See next page for housing)	Model	Beam	Delivered Lumens @3000K	Color Temp	Finishes
	R3ARWT Round, Wall Wash Wet Location	A Asymmetrical	435	CC24 Color Changing	BK Black BKWT Black/White HZWT Haze/White WT White
	R3ASWT Square, Wall Wash Wet Location	A Asymmetrical	450	CC24 Color Changing	BK Black BKWT Black/White HZWT Haze/White WT White

R3A_WT- _____ - _____

Example: **R3ARWT-ACC24-BKWT**

Housing (Sold as complete unit) New Construction, IC Rated, Airtight Housing



wacighting.com	Headquarters, East Manufacturing Facility	South East Manufacturing Facility	Central Manufacturing Facility	West Manufacturing Facility
Phone (800) 526.2588	44 Harbor Park Drive	1600 Distribution Ct	1700 South J Elmer Freeway, Ste 100	1750 S Archibald Ave
Fax (800) 526.2585	Port Washington, NY 11050	Lithia Springs, GA 30122	Cedar Hill, TX 75104	Ontario, CA 91761